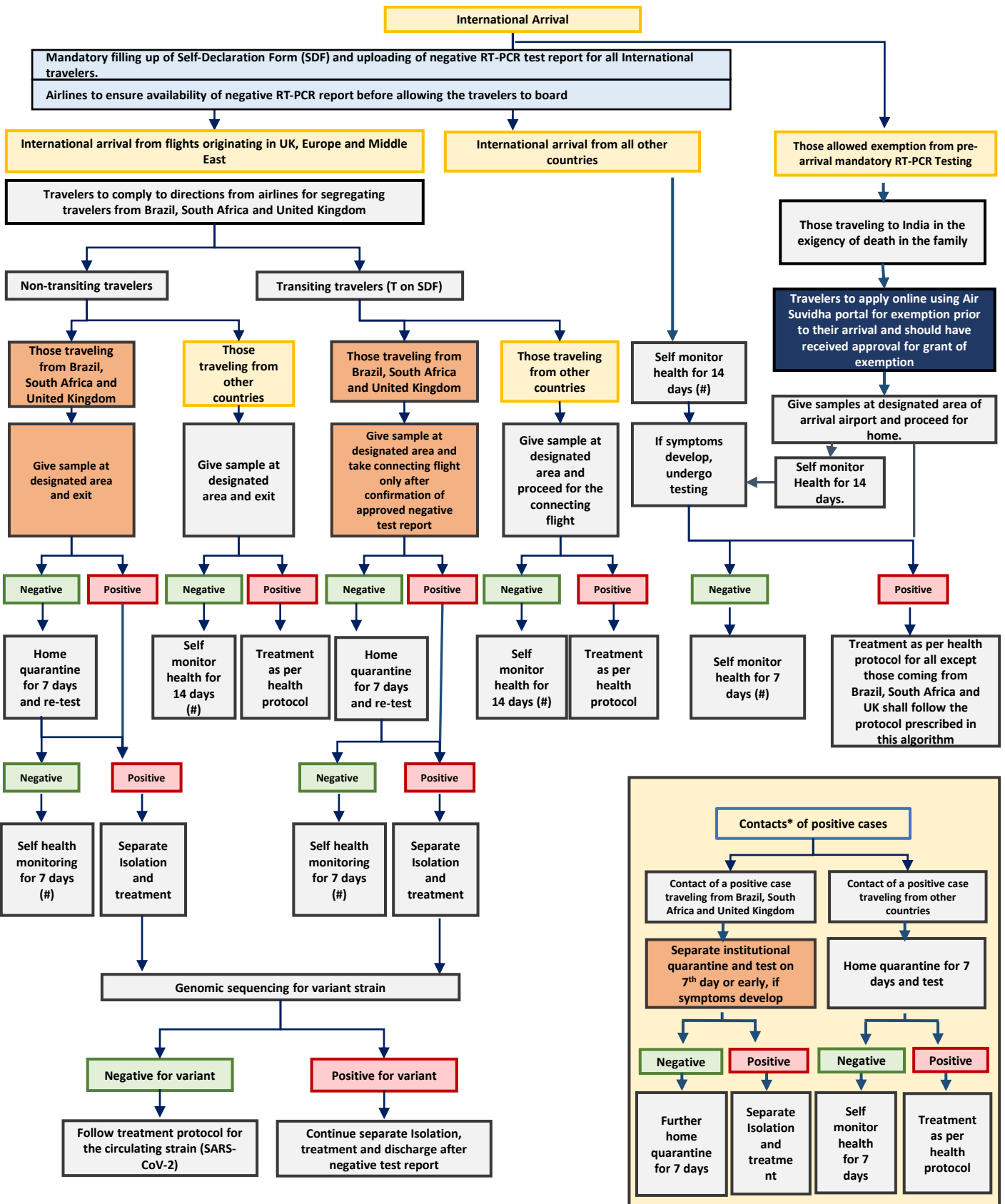


# Algorithm: Standard Operating Procedure for International Arrivals



\*Contacts of the case include the co-passengers seated in the – same row, 3 rows in front & 3 rows behind, along with the identified Cabin Crew as well as high-risk contacts in the community (as defined in Guidelines for Contact Tracing of Covid-19 Cases in Community Settings, available at <https://ncdc.gov.in/showfile.php?lid=570>)

\*\* Those exiting the airport may be allowed to exit after sampling, however those transiting to other domestic destinations shall proceed for exit only after a negative test report.

# Report to a medical facility if symptoms develop

Information regarding any passenger covered within the scope of this SOP, who travels to another State, will be immediately notified to the concerned State Health Authority.

If any passenger is not traceable initially or during any duration while being followed up should be immediately notified to Central Surveillance Unit of IDSP by the District Surveillance Officer